

AG 2 V2.1 Installation Guide for Windows VISTA

How to install AQUALAND GRAPH 2 V2.1

Install AQUALAND GRAPH 2 V2.1 from the CD-ROM provided by following the procedure described below.

(1) After confirming that your computer has started up properly, end all applications that are currently active, including any anti-virus applications as these may inhibit proper installation of certain files.

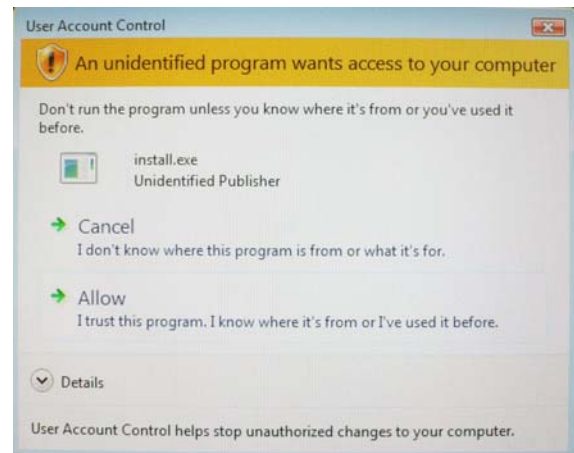
* Be sure you are logged into Windows with Administrator authority before continuing.

(2) Insert the CD-ROM provided into your computer. The software installation menu is displayed automatically.

* When the User Account Control of your personal computer is active, Windows will show the message right appears.

Click "Allow" to start the installation.

* When the installation menu is not displayed, double-click on "install.exe" contained on the CD-ROM inserted to display the installation menu.

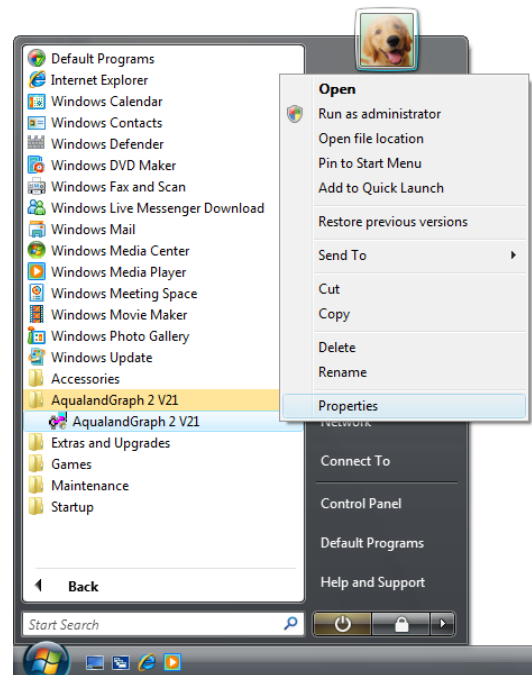


(3) Click on "Install AQUALAND GRAPH 2 V21" to start installation.

* When AQUALAND GRAPH 2 V2.1 does not work correctly, setup your personal computer by following the procedure described below.

(4) Click the Start button, and then click "All Programs".

Right-click the program icon of AqualandGraph 2 V21 from the Start menu [AqualandGraph 2 V21], and then click "Properties".



(5) Open “Compatibility tab, and then check “Run this program in compatibility mode for:”
Select “Windows XP (Service Pack 2)” form drop-down lists.

Check “Run this program as an administrator”.
Click “OK”.

