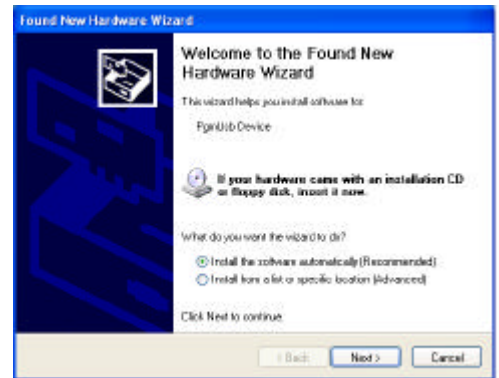


WindowsXP:

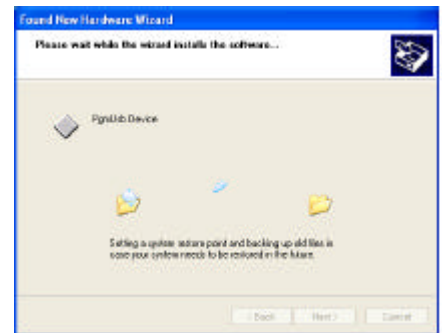
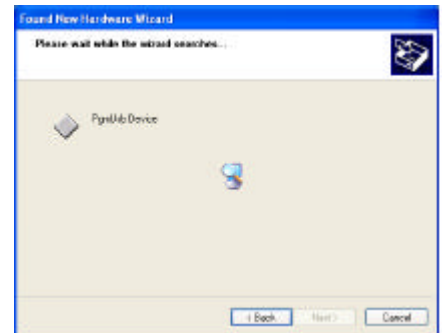
- (1) Turn on the power of the PC and confirm that WindowsXP has started up.
- (2) End any applications that are currently running on the PC.
- (3) Place the CD-ROM provided in the CD-ROM drive of the PC. If the AQUALAND GRAPH 2001 installation menu is displayed at this time, click on the “EXIT” button to close this menu.
- (4) If the communication unit is connected to the USB port the PC, the screen shown at right is displayed.



Once the check for detecting new hardware has been completed, the “Found New Hardware Wizard” is displayed.



- (5) Confirm that [Install the software automatically {Recommended}] is selected and then click on “Next”. The software is automatically detected and will start installing it .
Notice: It may take some time to detect the software.



- (6) After installation is completed, the screen shown at right is displayed.



- (7) Click on “Finish”. DATA can now be transferred using the USB interface.