

AG Nx Installation Guide for Windows VISTA

How to install AQUALAND GRAPH Nx & CAPgm

Install AQUALAND GRAPH Nx from the CD-ROM provided by following the procedure described below.

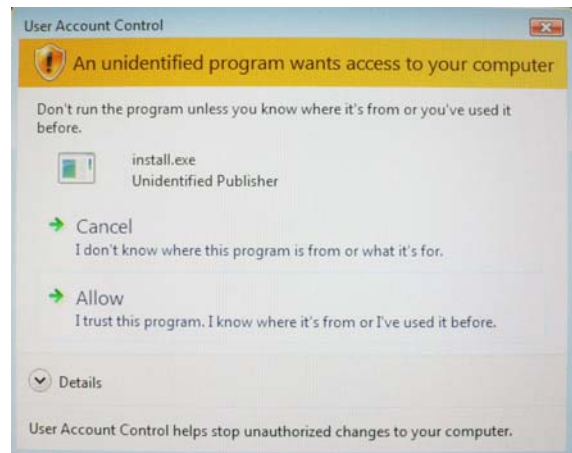
- (1) After confirming that your computer has started up properly, end all applications that are currently active, including any anti-virus applications as these may inhibit proper installation of certain files.
 - * Be sure you are logged into Windows with Administrator authority before continuing.

- (2) Insert the CD-ROM provided into your computer. The software installation menu is displayed automatically.

- * When the User Account Control of your personal computer is active, Windows will show the message right appears.

Click "Allow" to start the installation.

- * When the installation menu is not displayed, double-click on "install.exe" contained on the CD-ROM inserted to display the installation menu.



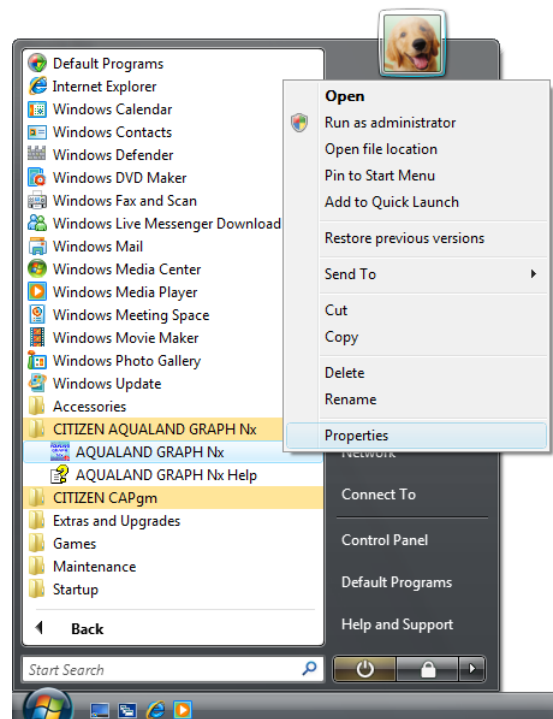
- (3) Click on "Install AQUALAND GRAPH Nx" to start installation.

- (4) Click on "Install CAPgm" to start installation.

- * When AQUALAND GRAPH Nx doesn't work correctly, setup your personal computer by following the procedure described below.

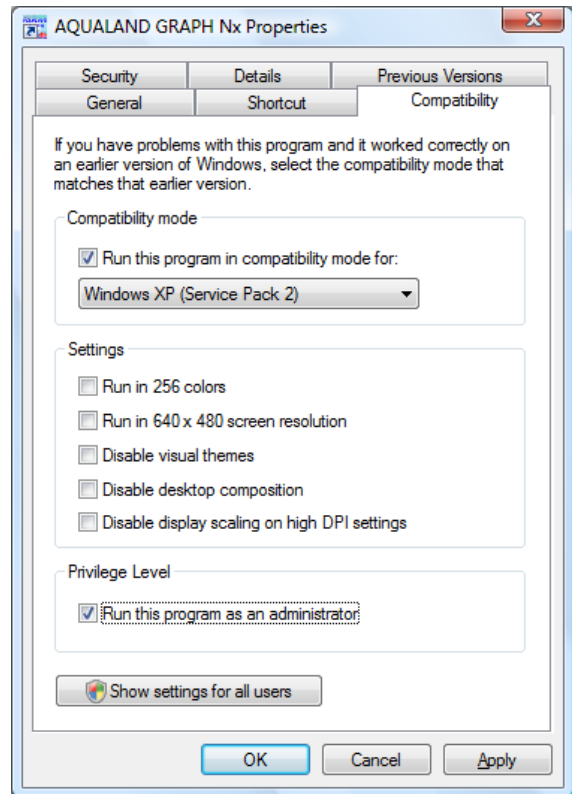
- (5) Click the Start button, and then click "All Programs".

Right-click the program icon of AQUALAND GRAPH Nx from the Start menu [CITIZEN AQUALAND GRAPH Nx], and then click "Properties".



(6) Open “Compatibility tab, and then check “Run this program in compatibility mode for:”
Select “Windows XP (Service Pack 2)” form drop-down lists.

Check “Run this program as an administrator”.
Click “OK”.



How to install the driver software

In order to perform the data transfer between your personal computer and the communication unit, install the USB driver software into your personal computer in advance.

Install the USB driver software by following the procedure described below.

(1) Be sure you are logged into Windows with Administrator authority.

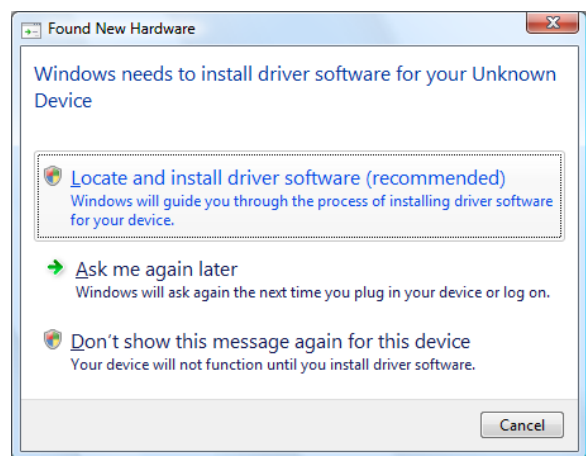
* You must login to Windows as an Administrator authority.

(2) Close all programs that are currently active.

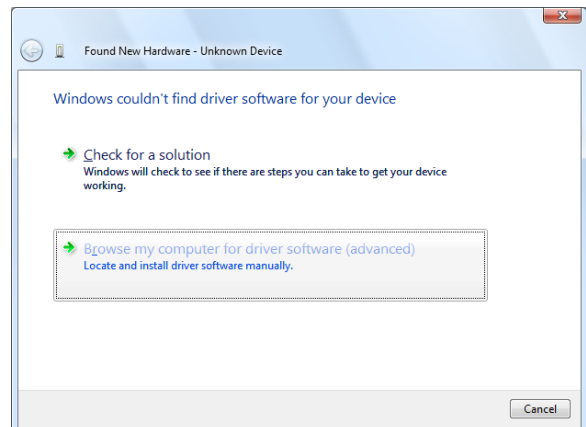
(3) Insert the CD-ROM provided into your computer. If the “AQUALAND GRAPH Nx” installation menu is displayed at this time, click on the “EXIT” button to close this menu.

(4) Plug in the communication unit to an available USB port on your personal computer.

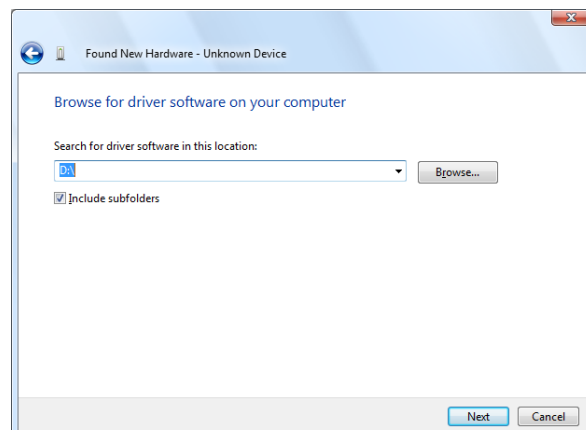
When the USB cable is properly plugged in, Windows will show that a new hardware has been found. Then, click “Locate and install driver software (recommended)”.

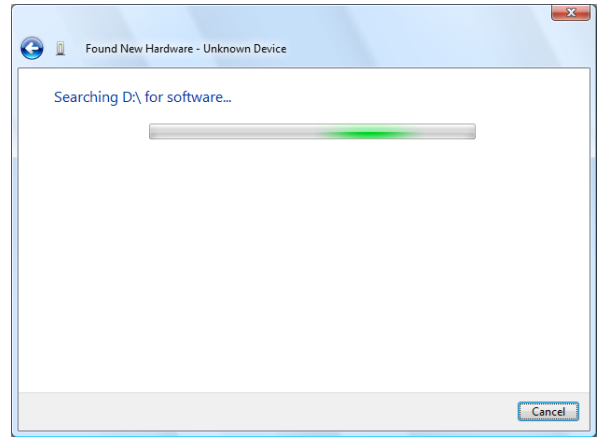


(5) Click “Browse my computer for driver software (advanced)”

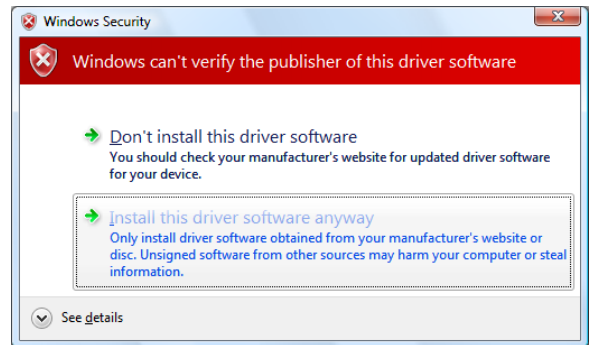


(6) Click “Browse” and specify the CD-ROM drive path name, then click “Next”. The installation of the driver software will start.

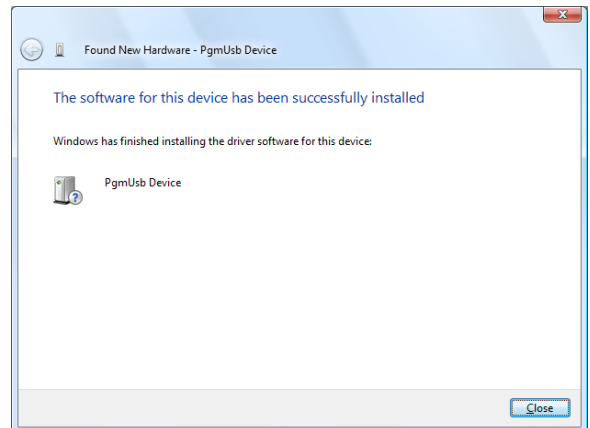




(7) If "Windows Security" is displayed, click "Install this driver software anyway"



(8) When the installation is completed, Windows will show "The software for this device has been successfully installed". Then, click "Close".



- * After installing the USB driver software, eject the CD-ROM from your computer and keep it in a safe place.
- * Installation of the USB driver software is required only once before performing the data transfer by using the communication unit for the first time. It is no longer required to install the driver software prior to a subsequent data transfer. However, the installation of the driver software is required if you perform the data transfer between the CYBER AUALAND Nx and any PC that the driver software has not been installed.