

Install AQUALAND GRAPH Nx by following the procedure described below.

(a) Download the install module to the working folder.

Free space is needed in the hard disk.

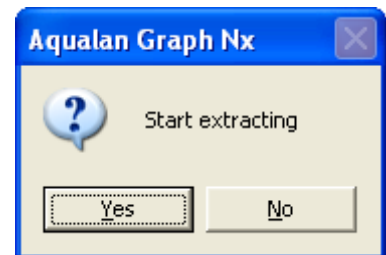
Folder(Directory)	Free space
Working folder for download and decompress install module	18MB
Windows directory	15MB
Install directory	10MB

\* Be sure you are logged into Windows with Administrator authority before continuing.

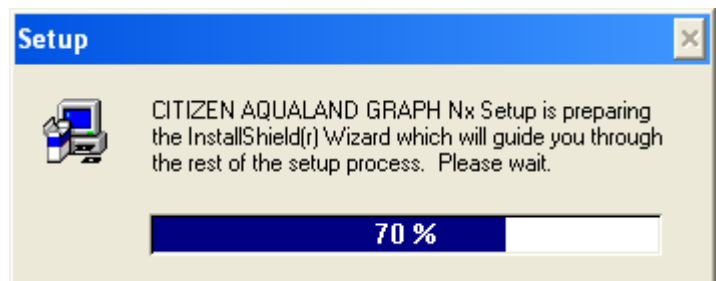
(b) Installing AQUALAND GRAPH Nx.

(1) After confirming that your computer has started up properly, exit all Windows application program.

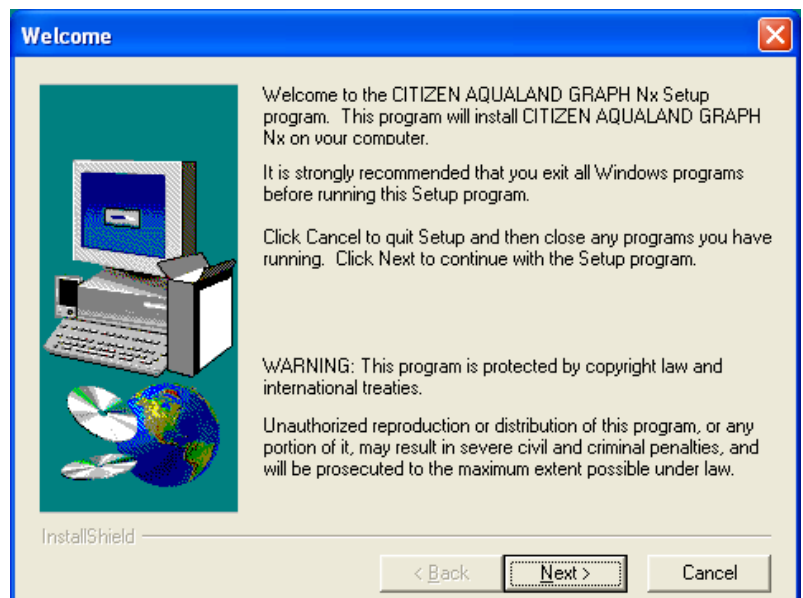
Double click the install module "AGNX\_ENG(4.0.1.1).exe" to start extracting the file. Click "Yes" when the dialog box right appears.



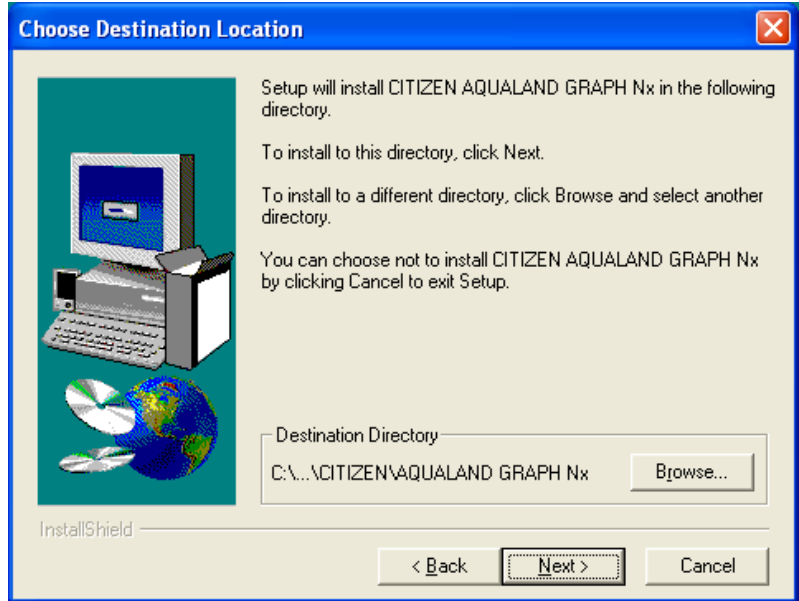
(2) Then soon after, the dialog box below will be automatically opened.



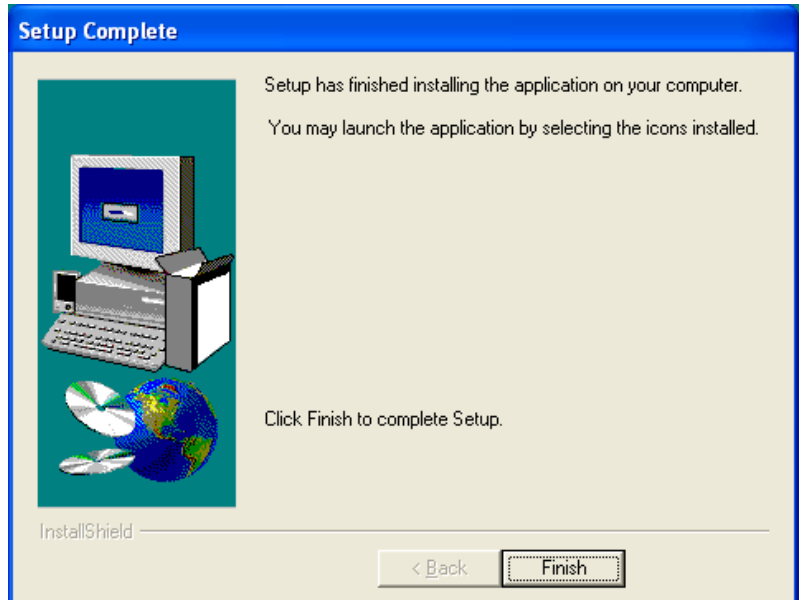
(3) When the window below is displayed, confirm the contents and click "Next" button.



(4) When the window below is displayed, confirm the contents and click "Next" button.



(5) When the install is completed, the dialog box below will be displayed. Click "Finish".



(6) AQUALAND GRAPH Nx is installed successfully.