

How to update the driver for CYBER AQUALAND Communication Unit

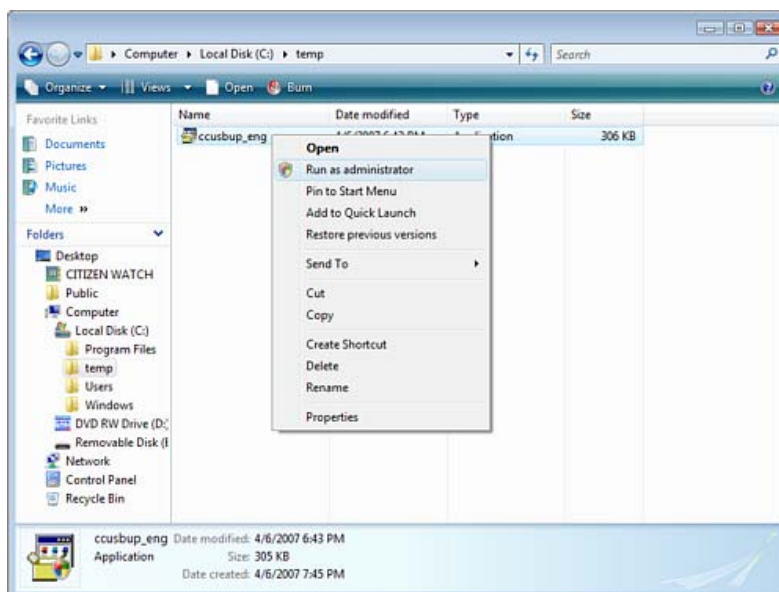
Downloading the driver software file and updating the driver

- ※ Be sure you are logged into Windows with Administrator authority before continuing.
- ※ This driver software is only for the 32 bit version of Windows VISTA. Do not install in other OS.
- ※ This driver software is created to correct the problem that rarely occurs, which the blue screen is displayed when disconnecting the USB communication unit from PC. Do not update your driver software if you do not have the above mentioned problem on your PC.
- ※ Make sure Aqualand Graph & the driver software in the enclosed CD-ROM are installed in your PC before updating the driver software. If they are not installed and you proceed in updating, update may fail.
- ※ Make sure to disconnect the communication unit from PC before you start updating the driver software.

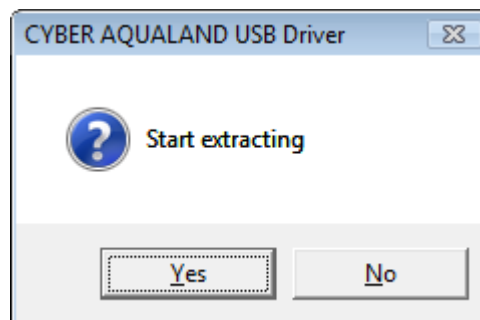
- (1) Download the driver software file to a directory on your hard drive. You need at least around 1MB free space to download the driver software file and to update the driver software.

Download ccusbup(VISTA)_eng.exe(306KB)

- (2) Right-click the downloaded file (CCUSBUP(VISTA)_eng.exe) and then click “Run as administrator” to start extracting the file.



Click “Yes” when the dialog box right appears.



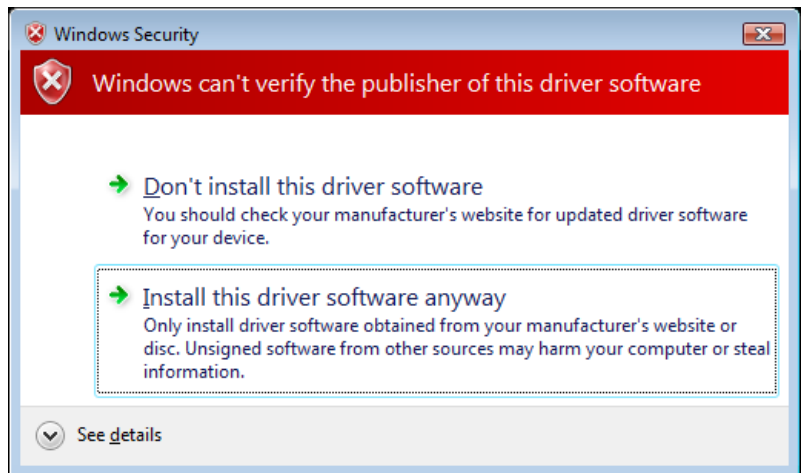
- (3) Update program runs automatically after extracting the file. Do not connect the USB communication unit until the next instruction appears on the screen.



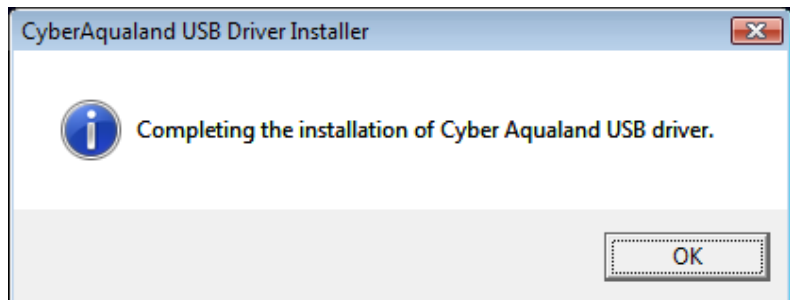
- (4) When the right screen appears, connect the communication unit to PC and wait for a moment.



- (5) If "Windows Security" is displayed, click "Install this driver software anyway"



- (6) Updating is completed when the dialog box right appears. Click OK to complete updating.



Release Note

Ver.1.0.1.2→Ver.7.0.1.0

Corrects the problem that blue screen is displayed when disconnecting the USB communication unit.

This problem is identified by the following PC.

DELL or TOSHIBA notebook PC with Intel 855PM chipset.

Ver.7.0.1.0→Ver.8.1.0.0

Corresponds to the 32 bit version of Windows VISTA.